

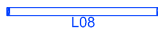
















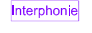




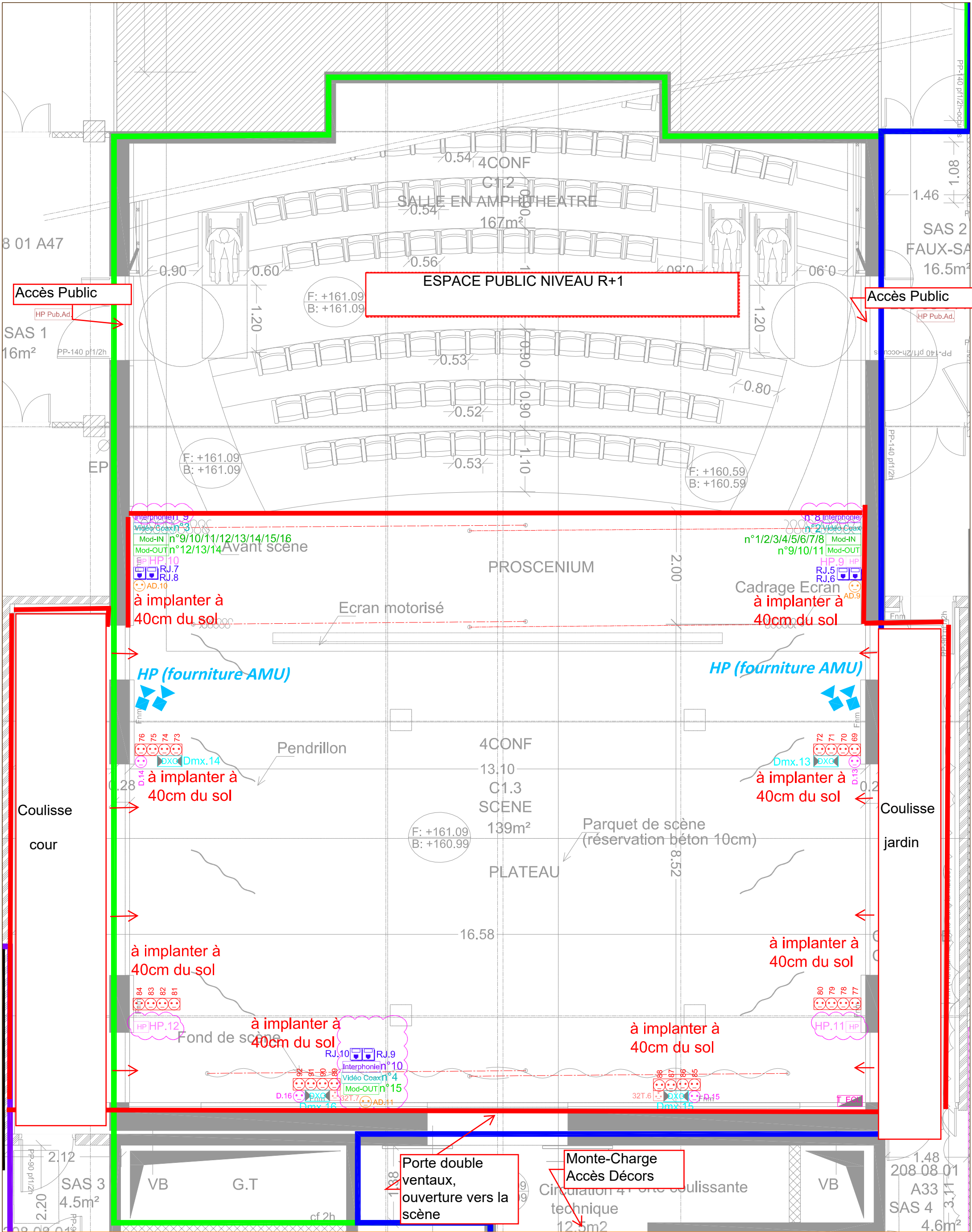
# LEGENDE

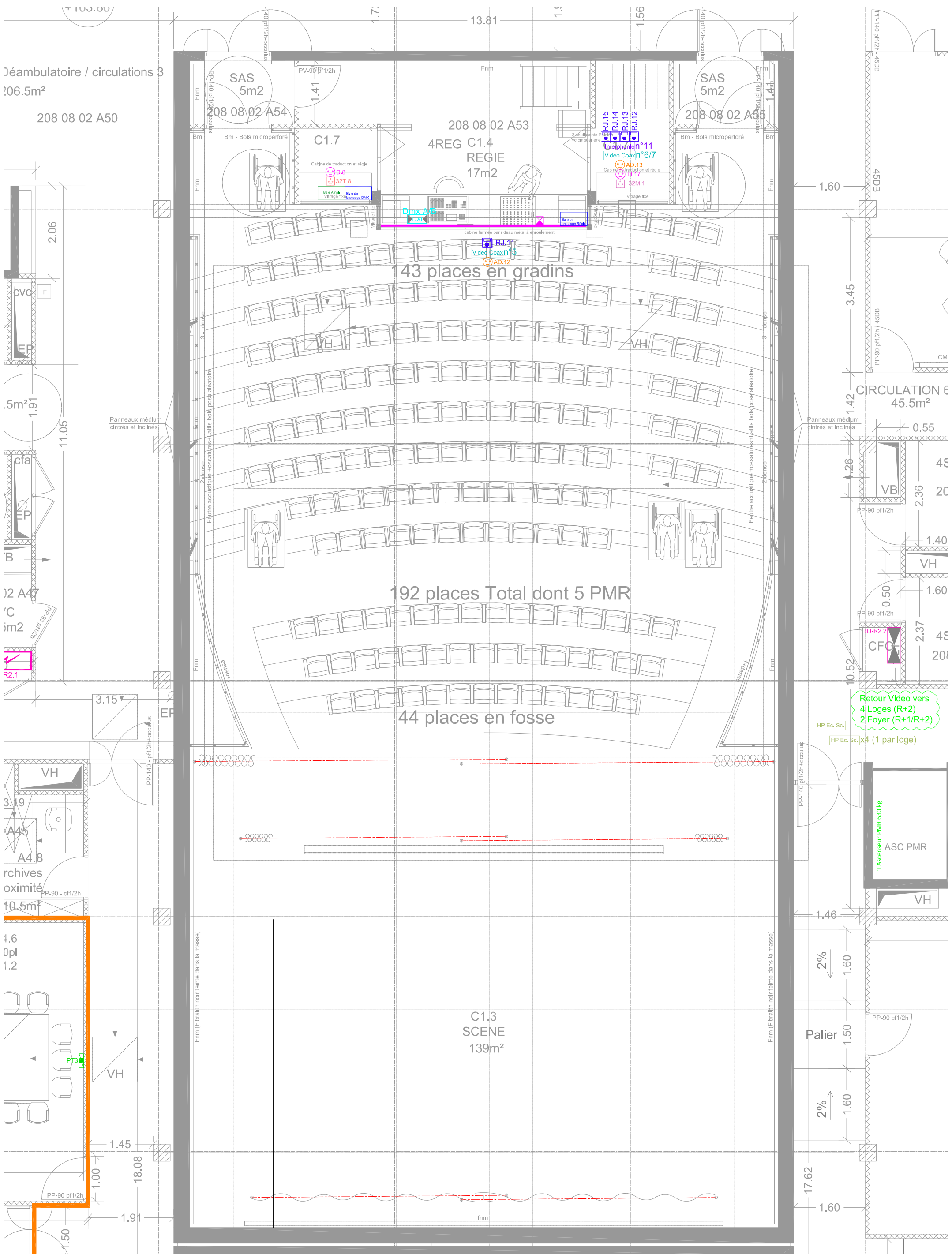
Symbole CFO	Désignation	Symbole CFA	Désignation	Symbole	Désignation
	96 Lignes d' alimentation Scénique graduées 16A Monophasé		16 Lignes DMX OUT Scénique		Luminaire tubulaire 60W à LED
	18 Lignes d' alimentation Scénique directe 16A Monophasé (17 + 1 offerte)		2 Lignes DMX IN Scénique		Pavé LED 600X600 38W
	8 Lignes d' alimentation Scénique directe 32A Tetrapolaire (7 + 1 devis)		17 Lignes IN Micro/Instruments		Luminaire 54W
	13 Lignes d' alimentation Audio directe 16A Monophasé		15 Lignes OUT Modules Scénique		Eclairage d' évacuation sur Source centralisé
	1 Ligne d' alimentation Audio directe 32A Monophasé		13 Lignes HP connectique Speakon		Eclairage d' ambiance sur Source centralisé
			7 Lignes vidéo coaxial HD-SDI 75 ohm		Prise de courant 16A
			15 Lignes Ethernet Audio Vidéo		Eclairage d' évacuation DARDO
			11 Ligne Interphonie 2 canaux		
			5 Lignes d' écoute de scène (4 dans loges + 1 dans circulation coté COUR)		
			2 Lignes d' écoute de public adress		

## THEATRE DU CUBE

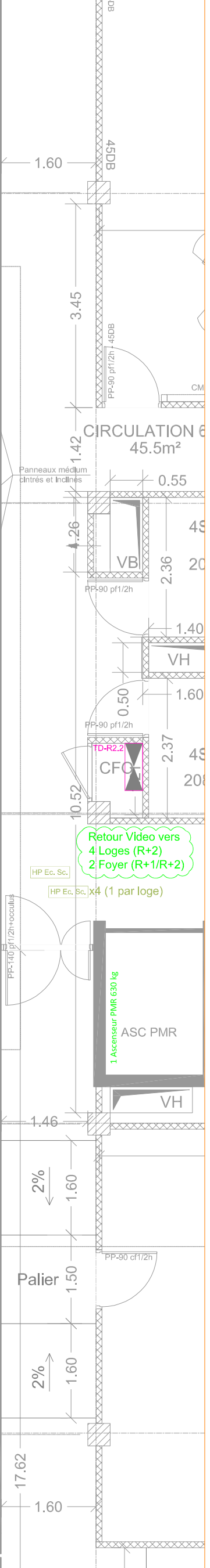
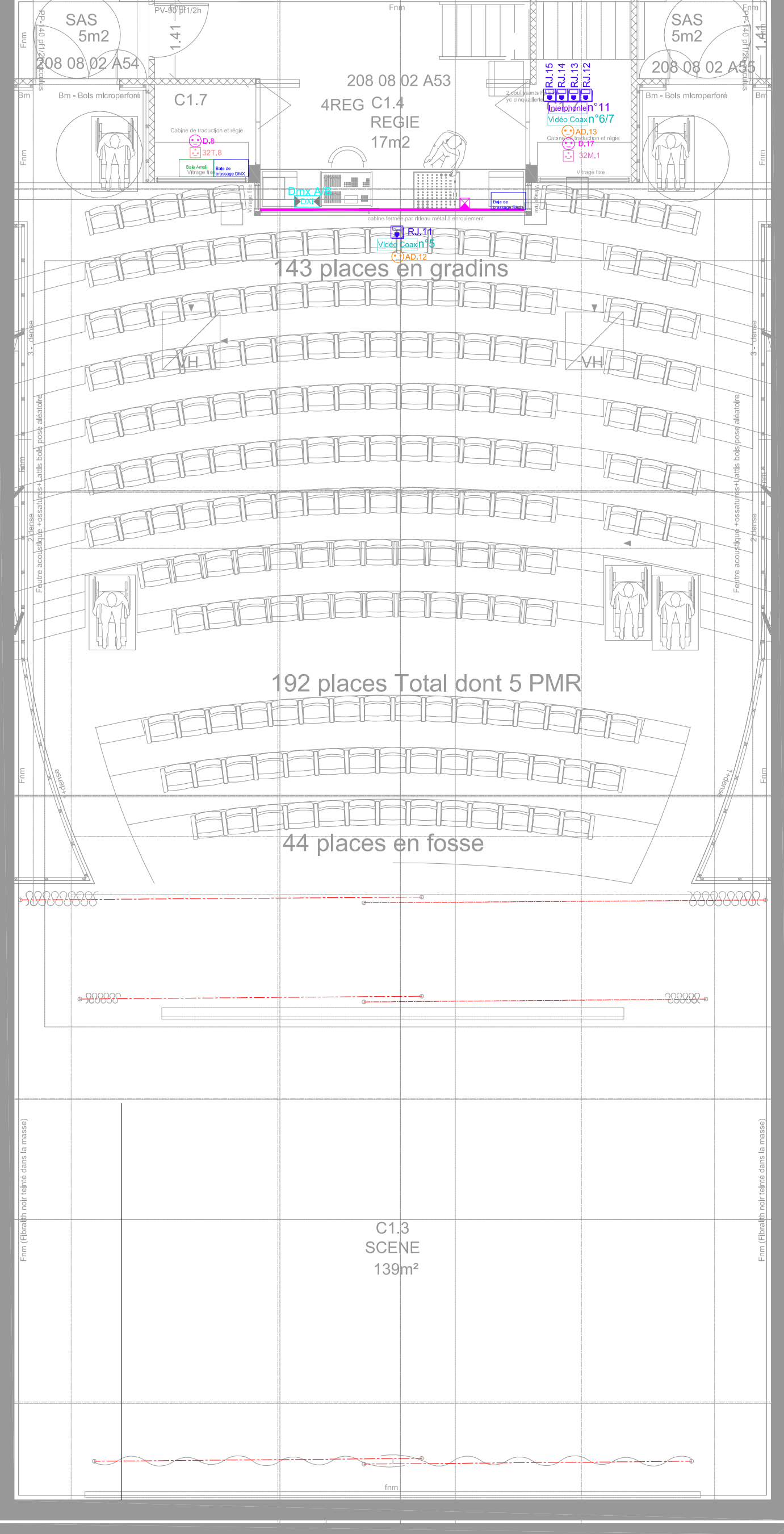
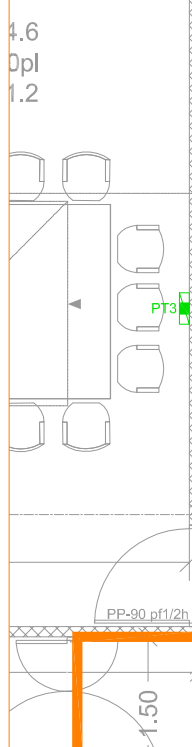
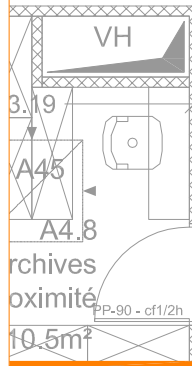
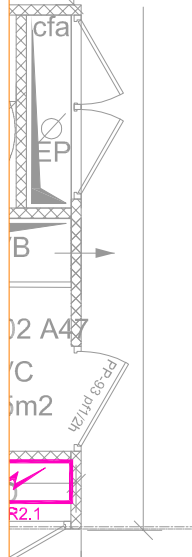
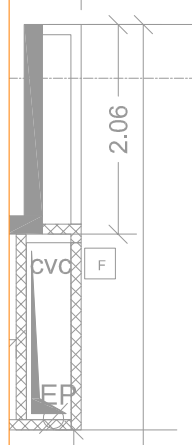
Descriptif des lignes

Symboles et désignations

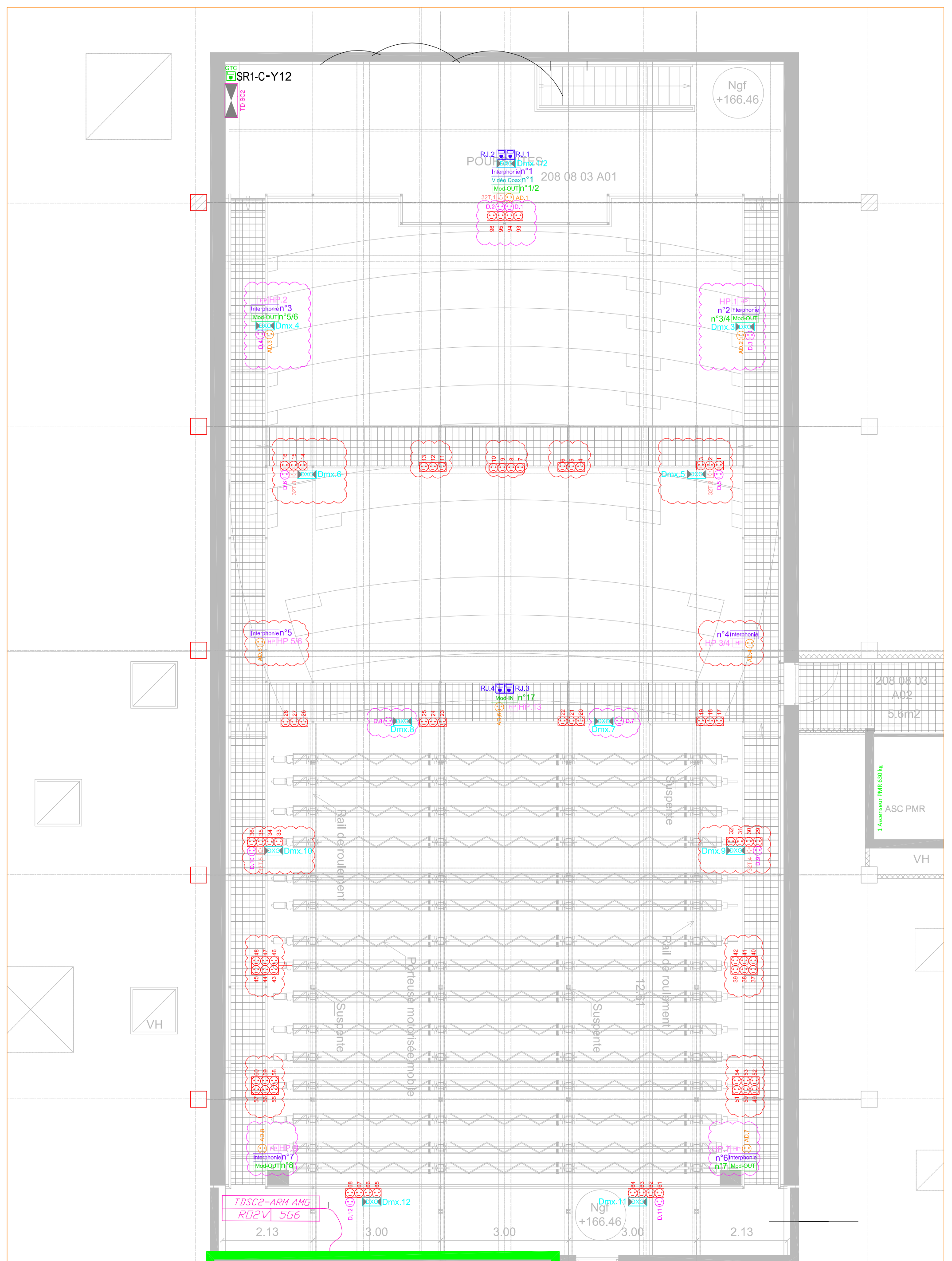




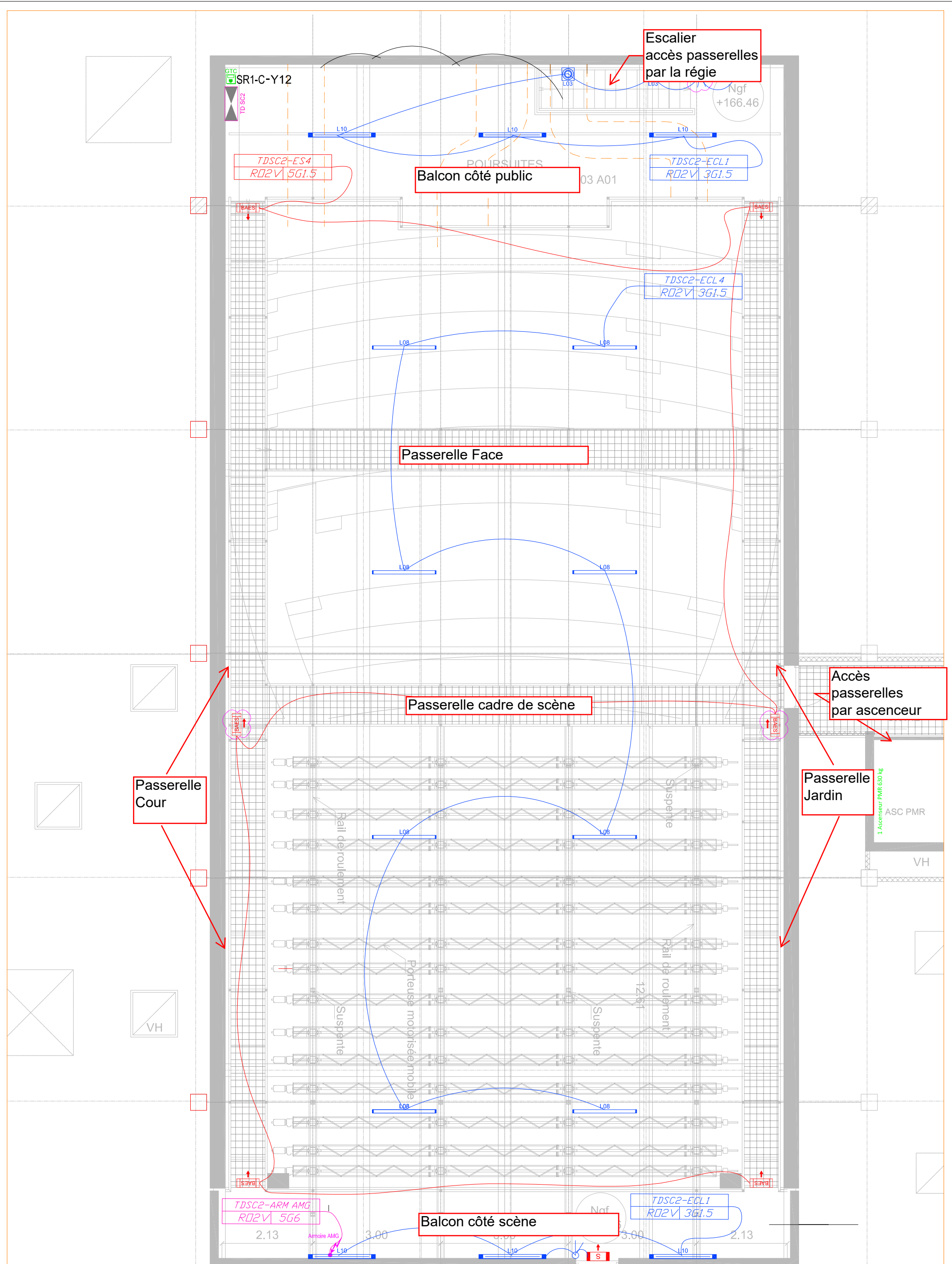
Déambulateur / circulations 3  
 106.5m<sup>2</sup>  
 208 08 02 A50



Retour Video vers  
 4 Loges (R+2)  
 2 Foyer (R+1/R+2)







**THEATRE DU CUBE**

Vue générale des passerelles et circulations "technique"

Vue générale de la cage de scène : 15 perches électriques sur rails.

Les perches se positionnent à la demande entre la passerelle cadre de scène et le balcon côté scène

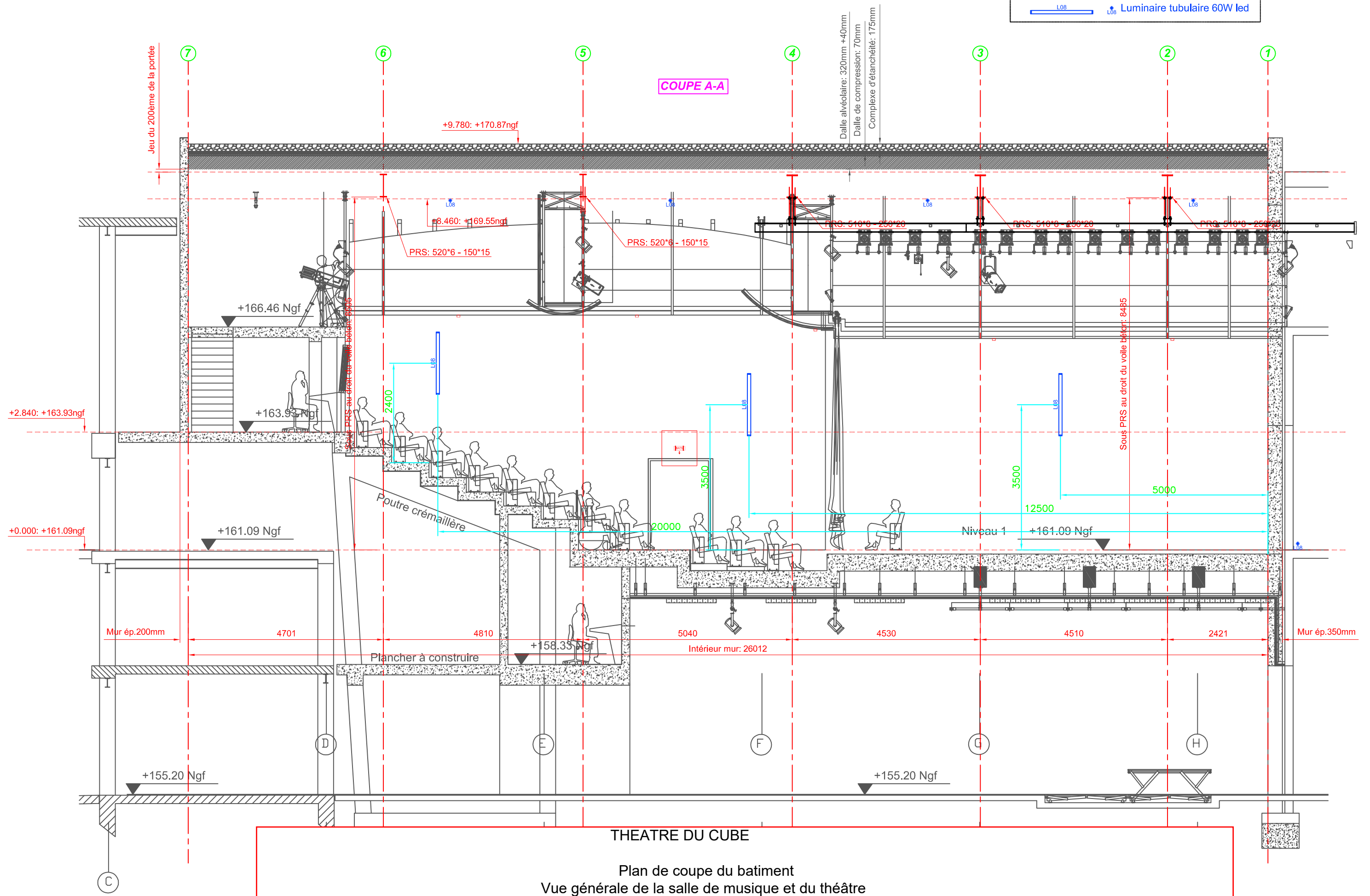
Les perches sont numérotées de 1 à 15 en partant du cadre de scène.

Niveau R+3

Page 5

**LEGENDE**

- Baes
- Bloc Ambiance LSC
- Luminaire tubulaire 60W led



**THEATRE DU CUBE**

Plan de coupe du bâtiment  
Vue générale de la salle de musique et du théâtre